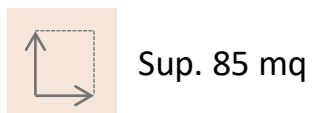
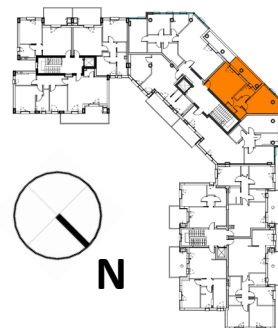
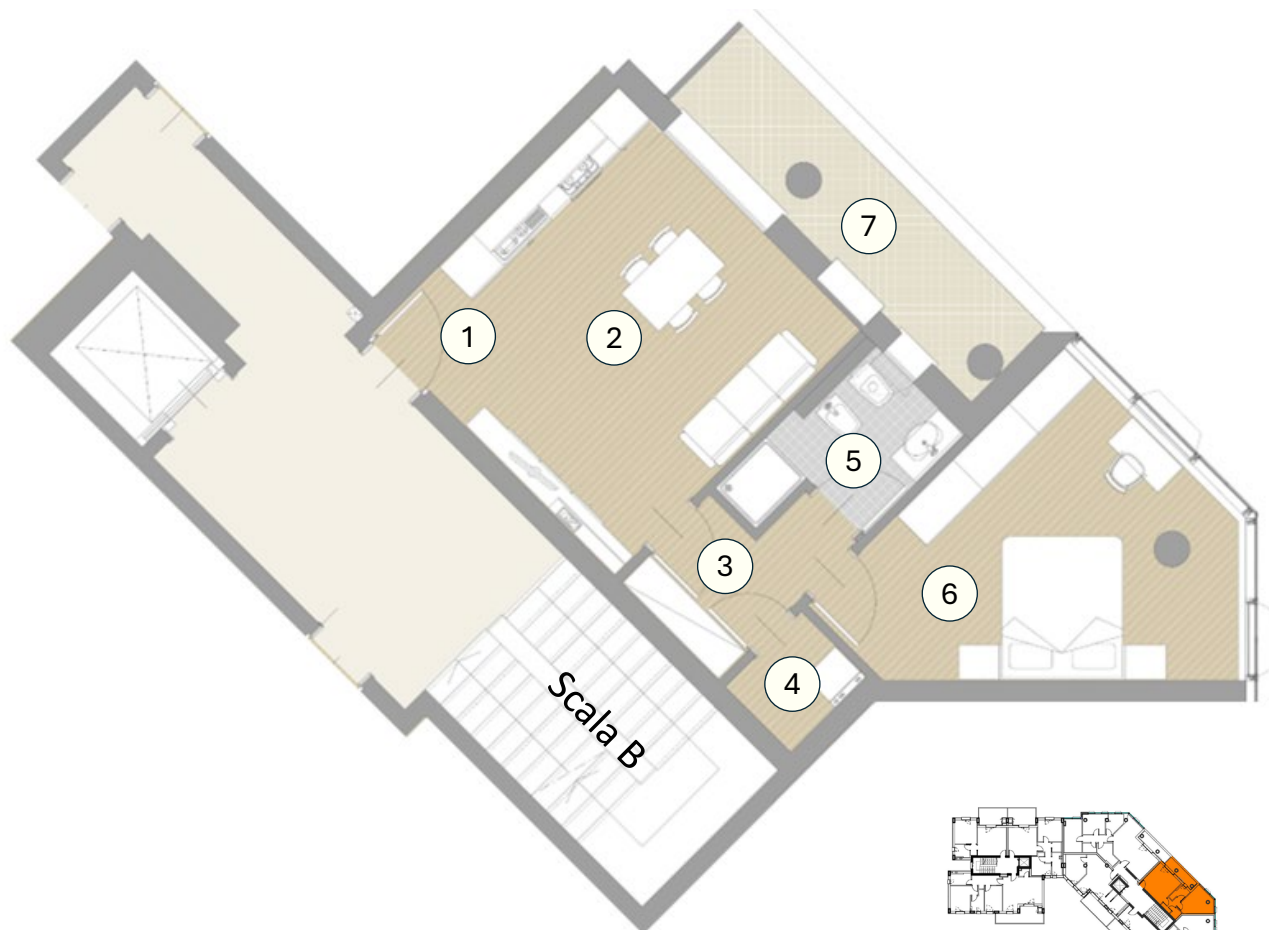


VETRI 7 - Unità B-4

(ANGOLO VIALE FRANCESCO CRISPI E VIALE MERCATO NUOVO)



Spazi:

- | | |
|-----------------------------|------------------------|
| 1. Ingresso | 6. Camera Matrimoniale |
| 2. Soggiorno-Angolo cottura | 7. Terrazzo |
| 3. Corridoio | |
| 4. Ripostiglio | |
| 5. Bagno | |