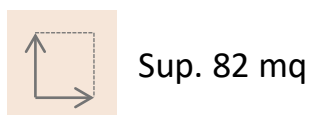
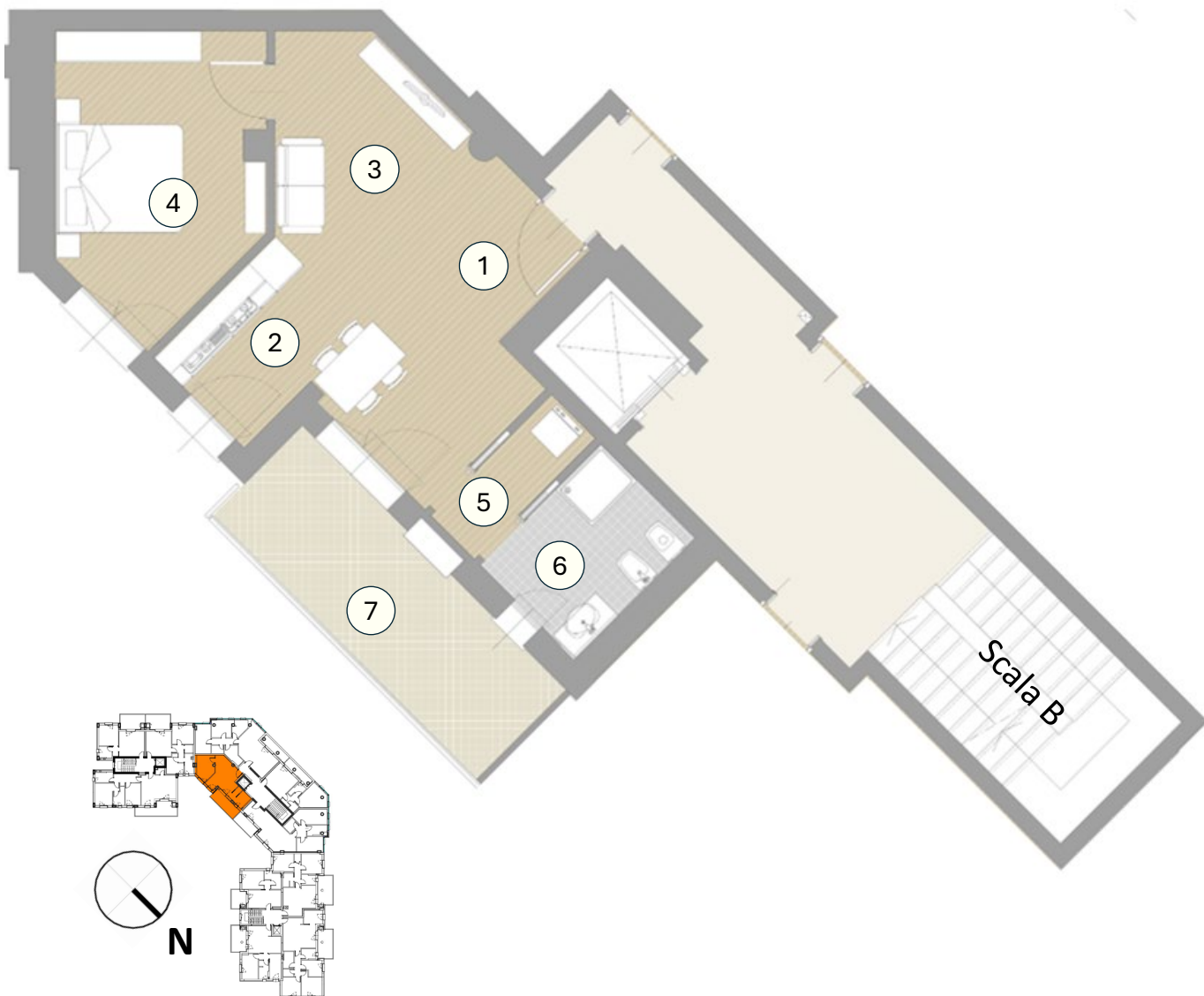


VETRI 7 - Unità B-2

(ANGOLO VIALE FRANCESCO CRISPI E VIALE MERCATO NUOVO)



Spazi:

- | | |
|------------------------|-------------|
| 1. Ingresso | 6. Bagno |
| 2. Cucina | 7. Terrazzo |
| 3. Soggiorno | |
| 4. Camera Matrimoniale | |
| 5. Anti bagno | |