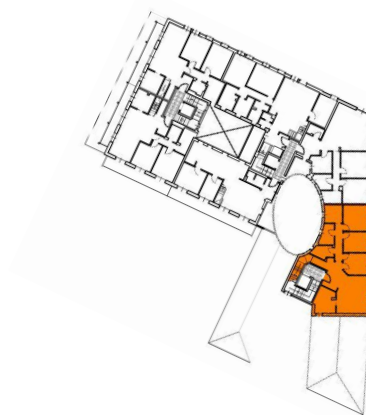
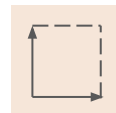


# Contrà Porti 21 - Unità F-3

(CONTRA' PORTI VICENZA)



Scala 1:100



Sup. 203 mq



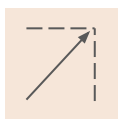
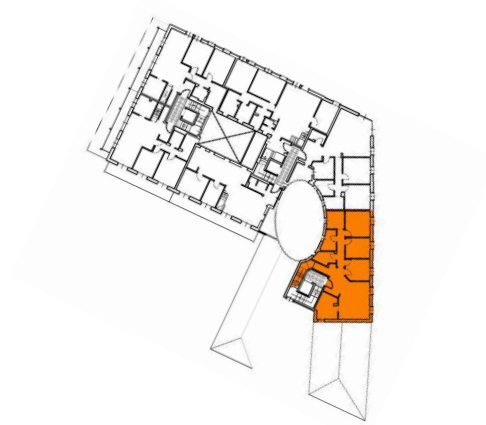
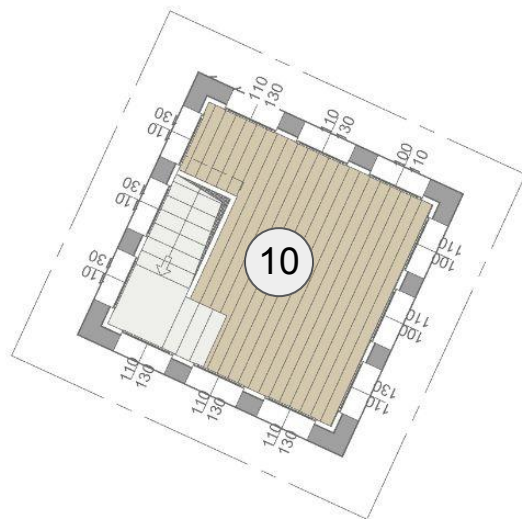
Ultimo piano

## Spazi:

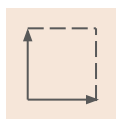
01. *Ingresso*
02. *Cucina*
03. *Soggiorno*
04. *Pranzo*
05. *Bagno 1*
06. *Camera singola*
07. *Camera singola*
08. *Camera doppia*
09. *Bagno 2*

# Contrà Porti 21 - Unità F-3

(CONTRA' PORTI VICENZA)



Scala 1:100



Sup. 203 mq



Piano attico

## Spazi:

10. *Attico*