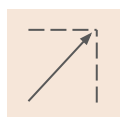
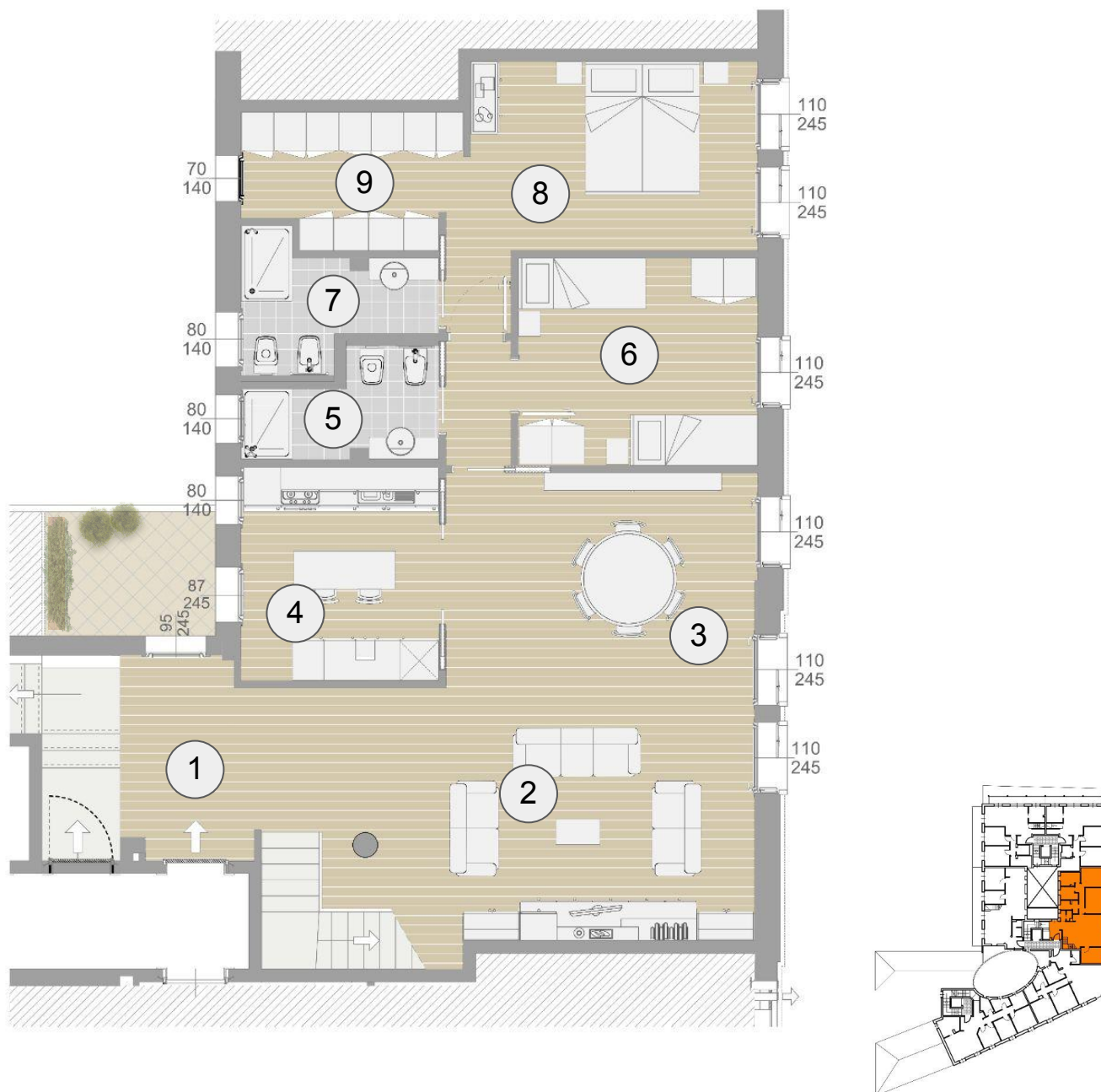
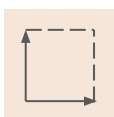


Contrà Porti 21 - Unità E-3

(CONTRA' PORTI VICENZA)



Scala 1:100



Sup. 244 mq



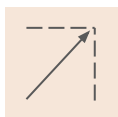
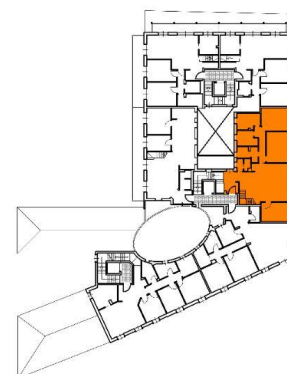
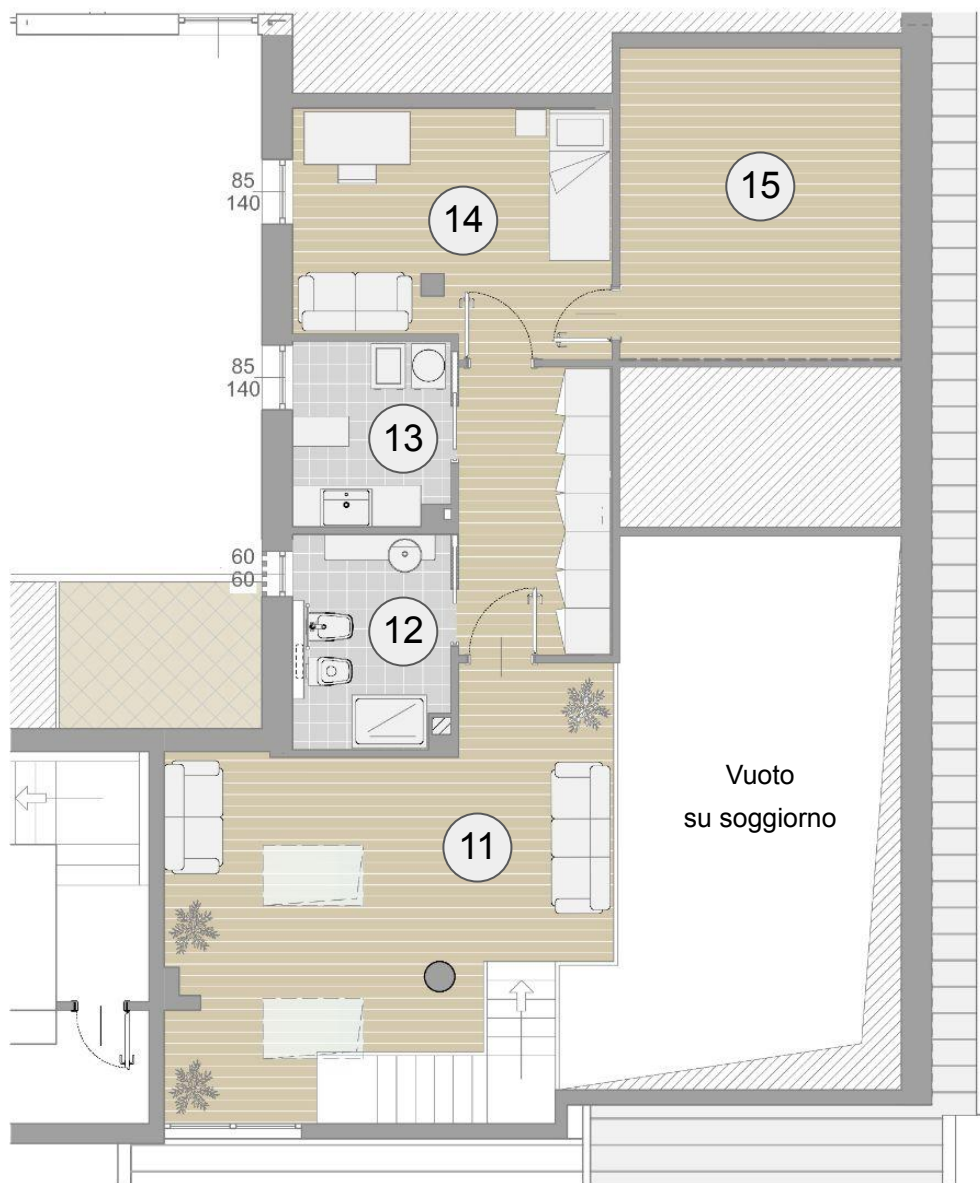
Ultimo piano

Spazi:

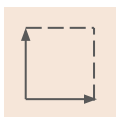
- | | |
|---------------|----------------|
| 01. Ingresso | 06. Camera |
| 02. Soggiorno | 07. Bagno 2 |
| 03. Pranzo | 08. Camera |
| 04. Cucina | 09. Guardaroba |
| 05. Bagno 1 | |

Contrà Porti 21 - Unità E-3

(CONTRA' PORTI VICENZA)



Scala 1:100



Sup. 244 mq



Piano
Soppalco

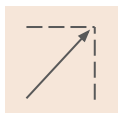
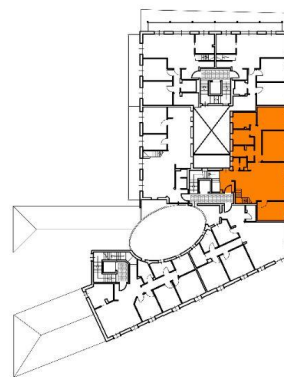
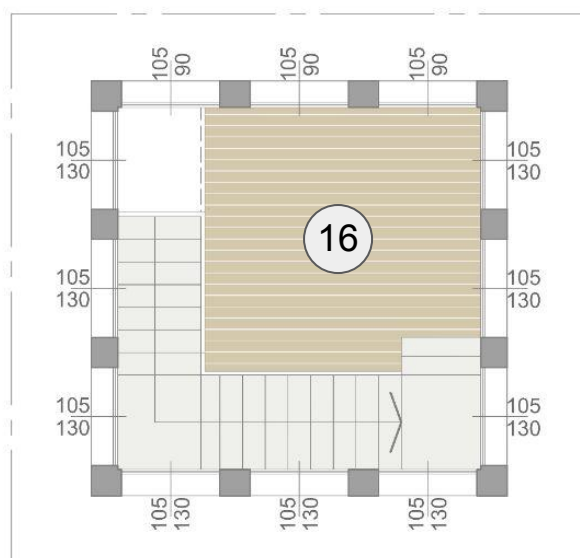
Spazi:

11. Salottino
12. Bagno 2
13. Lavanderia

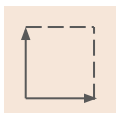
14. Studio
15. Ripostiglio / Sottotetto

Contrà Porti 21 - Unità E-3

(CONTRA' PORTI VICENZA)



Scala 1:100



Sup. 244 mq



Piano attano

Spazi:

16. *Attano*